



Analytics Canvas Tutorial:

General User Interface Overview



Overview

Welcome to the General User Interface overview article for Analytics Canvas. This is one of a number of detailed overview articles in which we explain how each feature of Analytics Canvas works, with additional context to help you understand it better, and use it to best suit your own needs.

This article aims to give you an overview of the User Interface, and to touch on some high level concepts such as Navigation, data sources and block libraries, as well as the Main Canvas, and Data Viewer.

When you start using Analytics Canvas, you will see something like this:

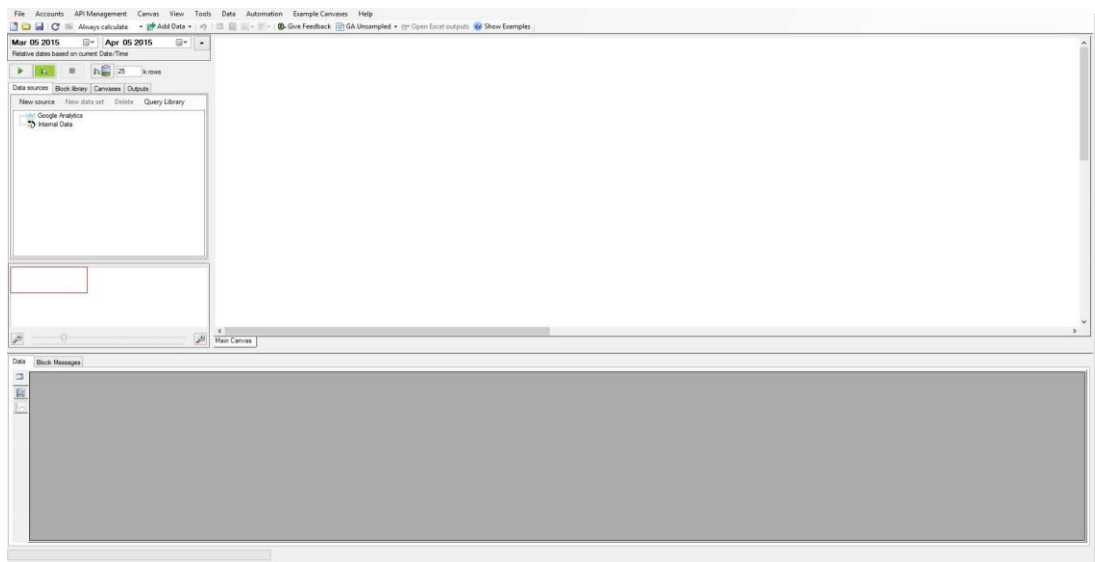


Figure 1 Start Analytics Canvas.

This is the home screen of version 1.7.5 of Analytics Canvas – the version we’ll be using for this article. You will notice that there are a number of windows arranged in this view. Let's look at each of these one by one.



The Navigation

The Navigation window – as its name implies – gives you a list of data sources and libraries that are available for you to use in your analysis. These are arranged in a tree structure, so if you click on a plus, you can drill into, for example, the data blocks that are available.

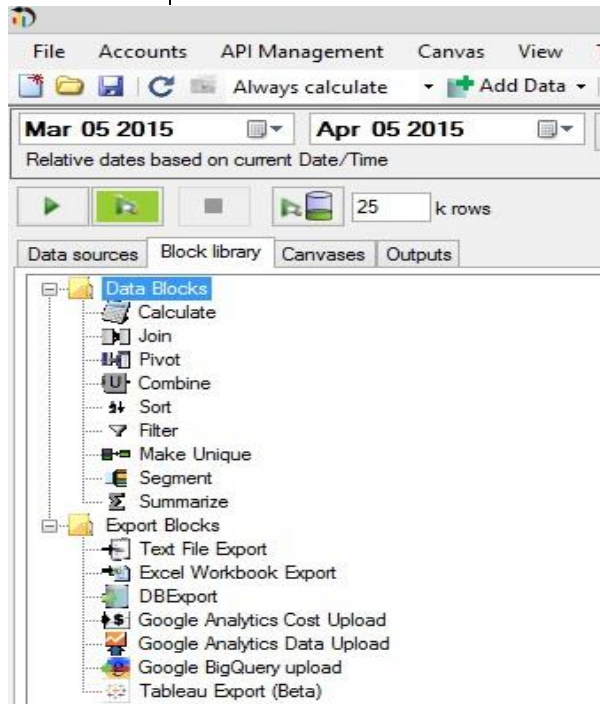


Figure 2 Navigation.

As you can see, there are quite a number of data blocks: Calculate, Join, Pivot, Combine, Sort, Filter, Make Unique, Segment, and Summarize. We can drag and drop each of these blocks on the Main Canvas, which is located on the right side of the screen. You will spend most of your time working with the Canvas where you will design your analysis. Hence, 'Analytics Canvas'! Let's take the Calculation block as an example.



Analytics Canvas Tutorial:

General User Interface Overview

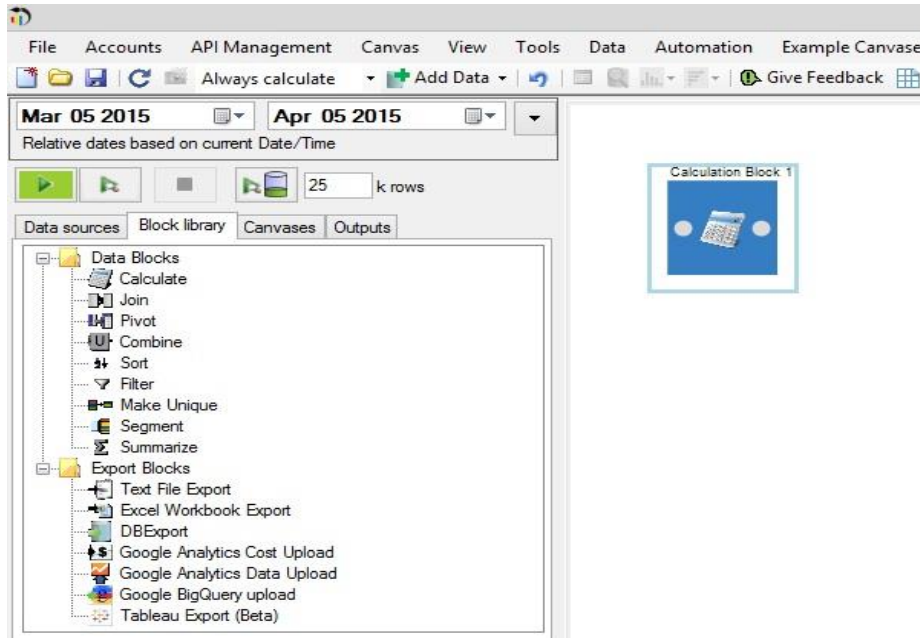


Figure 3 Calculation Block -Navigation.

The Data Sources window provides you with a tree-like view of all your available data sources. If you click on the New Source button, you will see a list of different data sources that you can connect to: text files, Excel files, various databases, Google Analytics and more.

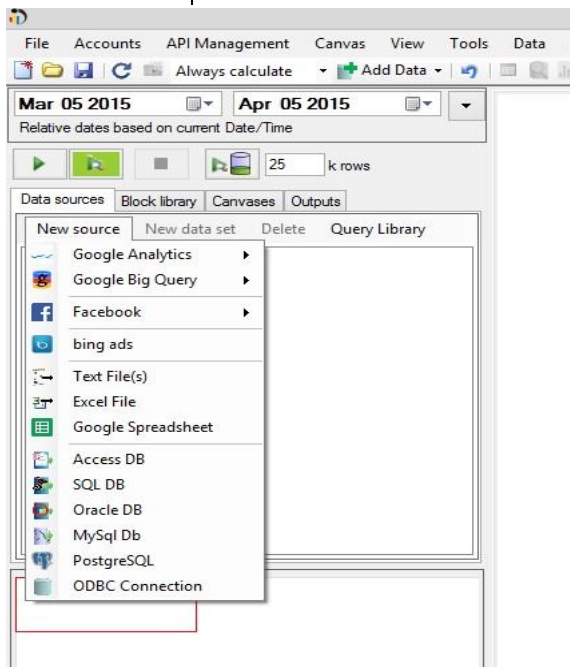


Figure 4 Data Sources - Navigation.



Main Canvas

The next window is the Main Canvas. Each block that you drag from the Navigation window will land here. You can also add a block by right clicking on the white space of the Canvas, and selecting the block you need.

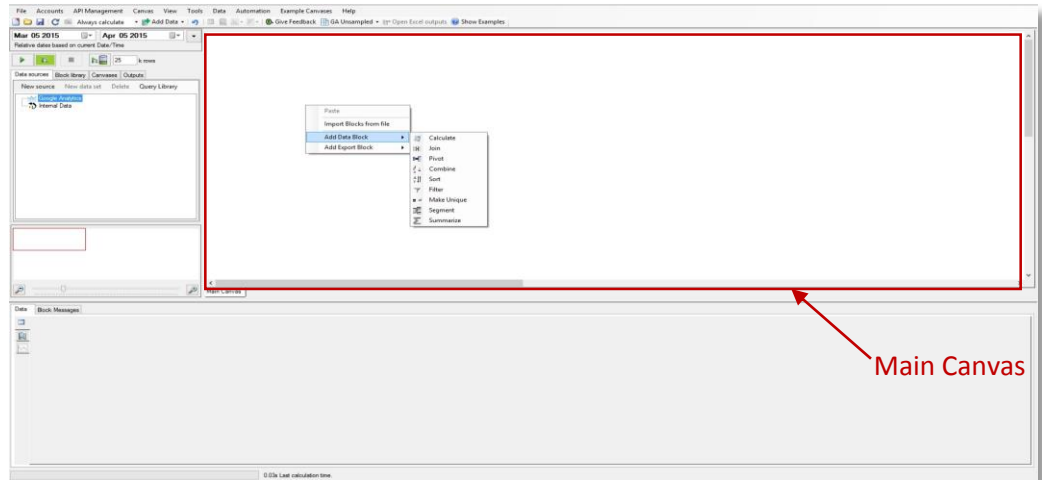


Figure 5 Main Canvas.

You will find yourself, as you get more expert, creating large canvases consisting of multiple blocks, joined together so as to solve the problem that you have in the Main Canvas window. As your canvases get bigger, you can use the Canvas Map window located under the Navigation block to switch between blocks; this you do by dragging a red square, or zooming in and out by clicking on the small magnifying glass icons on the left and right.



Data Viewer

Each block can be modified by changing the parameters associated with it. To edit a data block, first click on it. You will see the parameters associated with it displayed in Data Viewer, which is located under Navigation and the Main Canvas. Each time you drag a new block into the Main Canvas window, or select an existing block, the parameters associated with it will be shown here.

You can also edit a block by right clicking on it and selecting Edit Block. Right clicking on a block also allows you to add notes, copy, delete, and perform other actions, which we'll talk about later in this course.

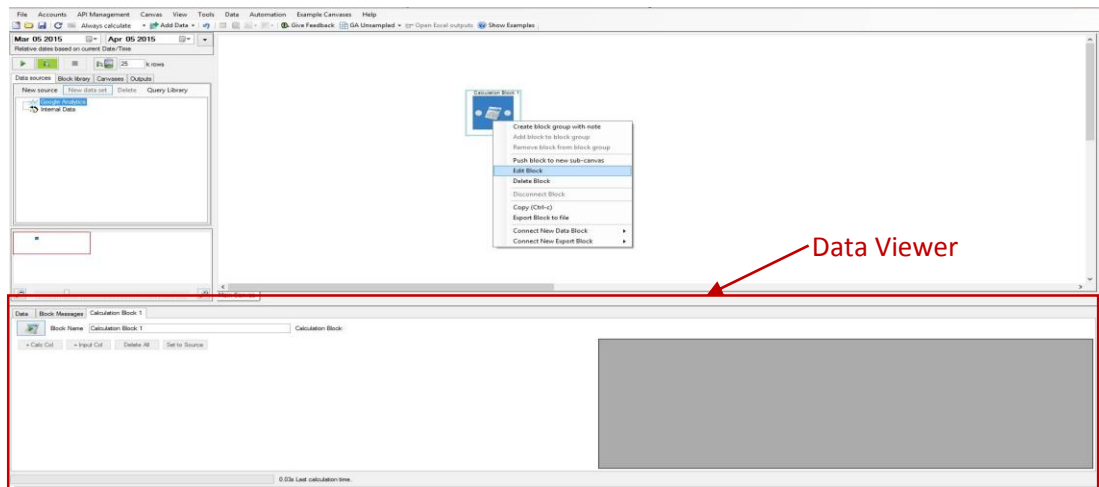


Figure 6 Edit Block - Main Canvas.

Data Viewer, which is located on the bottom of the screen, contains information on the parameters of the block, data that is loaded into it, and block messages. Each time you select a new block, its parameters will be displayed in this window.

You can change the size of the Data Viewer in order to see more details, by clicking and dragging the top bar.

Conclusion

Thank you for reading this tutorial on the Analytics Canvas General User Interface. We invite you to continue with the tutorial training to learn more about using Analytics Canvas.